

품질경영시스템인증서

씨에스조이엔터프라이즈(주)

인천광역시 남구 장고개로92번길 12

한국표준협회는 위 조직의 품질경영시스템이
아래의 표준과 인증범위에 적합함을 인증함

인증번호

QMS- 1662

표준

KS TISO 4064-1: 2007 ISO 4064-1 : 2007

인증범위

수도미터, 온수미터, 적산열량계, 유량계, 가스미터, 대형수도미터, 스트레이너,
전력량계, 대형수도미터용 단판, 자동원격검침시스템의 설계, 개발, 생산 및 판매

유효기간

2014년 12월 18일부터 2017년 12월 17일까지

최초인증일: 2002년 10월 13일

2014년 10월 21일

한국표준협회

서울특별시 강남구 테헤란로 305



QMS에 대한 IAF/MLA 가입 인정기관에 의한 인증. 이는 한국인증원(KAIST로부터
품질경영체계 인증기관으로 인정(인정번호:KAS-QC-30)되었음을 나타내는 인장이 있습니다.

KSA



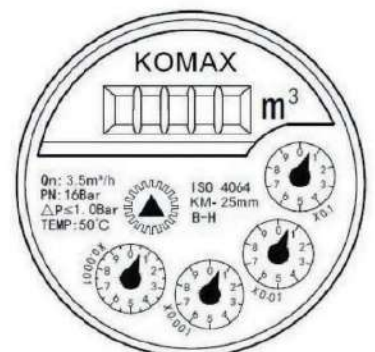
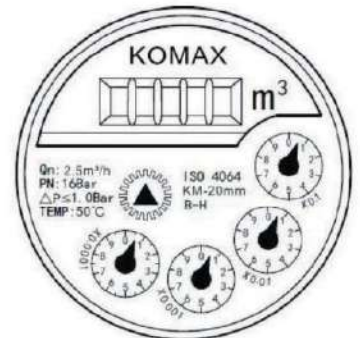
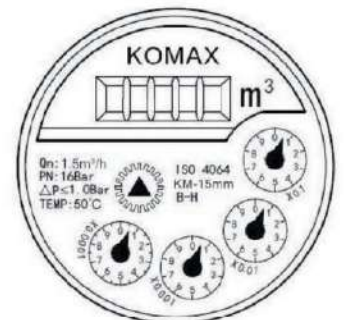


KOMAX

MULTI JET WATER CLASS B - KM 15 ~ 50

DIMENSIONS

Type	Size	L Length	B With	H Height	d Connecting Thread
KM - 15	15	165	98	116	G1/2B
KM - 20	20	190/195	98	117	G3/4B
KM - 25	25	225/260	103.5	124	G1B
KM - 32	32	230/260	103.5	124	G1 1/4B
KM - 40	40	245/300	125	162	G1 1/2B
KM - 50	50	300	125	162	G2B
		280	160	187.5	Flange connect ISO 7005-2:1988 Φ D=125



MAIN TECHNICAL SPECIFICATIONS

Type	Size (mm)	Class	Q _s	Q _p	Q _t	Q _{min}	Min. Reading	Max. Reading
			Overload Flow	Permanent Flow	Transitional Flow	Min. Flow		
			m ³ /h		L/h		m ³	
KM - 15	15	B	3	1.5	120	30	0.00005	99.999
KM - 20	20	B	5	2.5	200	50	0.00005	99.999
KM - 25	25	B	7	3.5	280.0	70	0.00005	99.999
KM - 32	32	B	12	6.0	480	120	0.00005	99.999
KM - 40	40	B	20	10	800	200	0.00005	99.999
KM - 50	50	B	30	15	3000	450	0.00005	99.999

KOMAX

WOLTMAN WATER METER KM 50~300

Standards

Conforms to ISO 4064 Class B

Features

- Leak proof and sealed totaliser
- Magnetic drive
- Repairable without interrupting water supply
- Removable mechanism ensures easy maintenance
- Totaliser protected by metallic cover
- Reliable sensitive metrology and low pressure loss

Woltman Water Meter, dry dial, direct reading. Manufactured in the calibers 50mm to 150mm. 360 revolving dial for easier. There are no risk of corrosion nor of sedimentation as on rotating gears are immersed in the water, with the exception of the turbine.

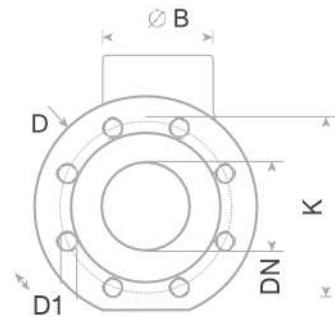
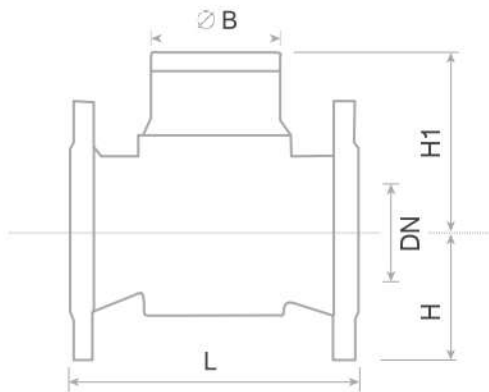
Motion transmission to the working mechanisms carried out by permanent magnet makes the meter sensitive and accurate.



FLOWDATA

Meter size Dia DN (mm)	Class	q_s Overload Flow	q_p Nominal Flow	q_t Transitional Flow	q_{min} Min. Flow	Starting Flow	Min. Reading lectura	Max. Reading lectura
		m ³ /h						
50	B	30	15	3	0.45	150	0.01	9.999.999
65	B	50	25	5	0.75	170	0.01	9.999.999
80	B	80	40	8	1.2	280	0.01	9.999.999
100	B	120	60	12	1.8	400	0.01	9.999.999
125	B	200	100	20	3	800	0.01	9.999.999
150	B	300	150	30	4.5	1200	0.01	9.999.999
200	B	500	250	50	7.5	2250	0.01	9.999.999
250	B	800	400	80	12	2500	0.01	9.999.999
300	B	1200	600	120	18	7000	0.01	9.999.999

DIMENSIONS



Meter size Dia DN (mm)	Length L	Width B	Height H	Connecting Flange			Weight kg
	mm			D (mm)	Bolt Circle dia D1 (mm)	Connecting Bolt dia (Pcs)	
50	200	175	250	165	125	4 x M16	12
65	200	185	255	185	145	4 x M16	13
80	225	200	265	200	160	8 x M16	15
100	250	220	275	220	180	8 x M16	19
125	250	245	285	245	210	8 x M16	22
150	300	285	375	285	240	8 x M20	47
200	350	345	400	340	295	8 x M20	48
250	450	395	484	395	350	12 x M20	110
300	450	445	506	445	400	12 x M20	115

BS STANDARD - BS 4504 - PN16 – PLRF/FF



Nominal DN	D	C	h	Holes	do	t	G	f
	10	90	60	14	4	18	14	40
15	95	65	14	4	22	14	43	1.6
20	105	75	14	4	27	16	52	1.6
25	115	85	14	4	34.5	16	62	1.6
32	140	100	18	4	43.5	16	72	1.6
40	150	110	18	4	49.5	16	82	1.6
50	165	125	18	4	61.5	18	97	1.6
65	185	145	18	4	77.5	18	117	1.6
80	200	160	18	8	90.5	20	132	1.6
100	220	180	18	8	116	20	152	1.6
125	250	210	18	8	141.5	22	182	1.6
150	285	240	22	8	170.5	22	210	1.6
200	340	295	22	12	221.5	24	264	2
250	405	355	26	12	276.5	26	320	2
300	460	410	26	12	327.5	28	375	2
350	520	470	26	16	359.5	30	435	2
400	580	525	30	16	411	32	485	2
450	640	585	30	20	462	34	545	2
500	715	650	33	20	513.5	38	605	3
600	840	770	36	20	616.5	42	725	3
700	910	840	36	24	-	46	795	3
800	1025	950	39	24	-	48	900	3
900	1125	1050	39	28	-	52	1000	3
1000	1255	1170	42	28	-	56	1115	4
1200	1485	1390	48	32	-	-	1330	4
1400	1685	1590	48	36	-	-	1530	4
1600	1930	1820	56	40	-	-	1750	4
1800	2130	2020	56	44	-	-	1950	4
2000	2345	2230	62	48	-	-	2150	4

bảng tâm lỗ đồng hồ Circle(C)